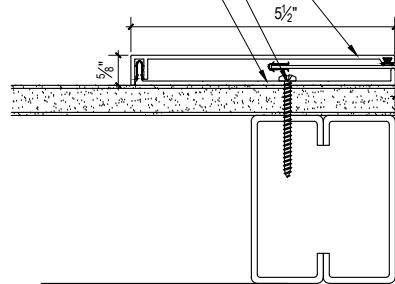


0.060" CLEAR ANODIZED
ALUM. CENTER PLATE

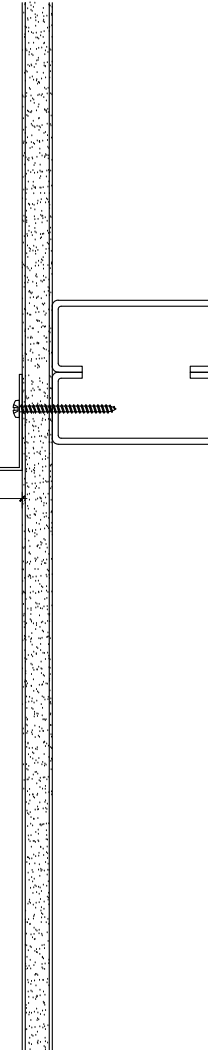
CONT. ALUM. EXPOSED EXTRUSION
CLEAR ANODIZED FINISH

FASTENER @ 18" O.C. MAX, BY INSTALLER

CONT. BASE EXTRUSION, MILL FINISH



1'-0"



SCALE: 3"=1'-0"



M.H. POWELL & CO., INC.
ARCHITECTURAL SEISMIC EXPANSION JOINT SYSTEMS

2313 YATES AVENUE | PHONE : (323) 887-0037
 COMMERCE, CA 90040 | FAX : (323) 887-0877
 WEB : www.mhpowell.net

MODEL
KFM-12-2.5
WALL/CEILING CORNER EJC

PROJECT : _____ PROJECT # : _____
 LOCATION : _____ DATE : _____
 ARCHITECT : _____
 CUSTOMER : _____

PAGE #